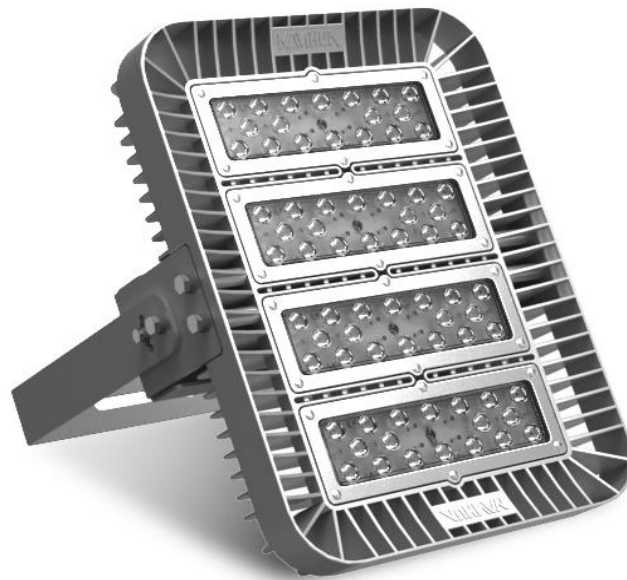


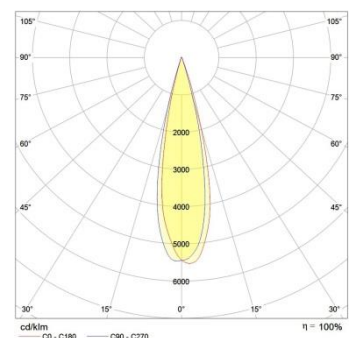
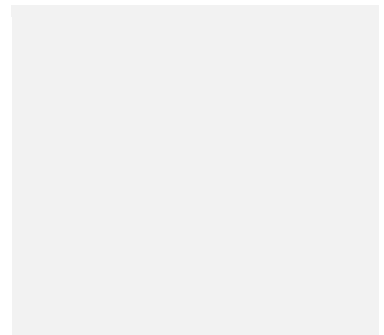
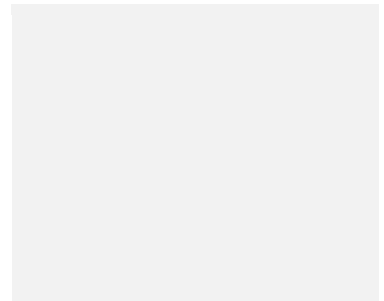
LF30X Floodlight series



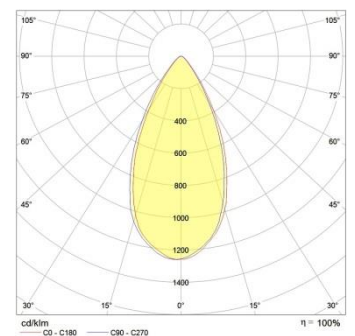
The LF30X series is designed for the lighting system of hoist and lifting cranes working at ports & quays, but is also perfect for application in heavy duty industries such as Marine & Offshore, steel and mining.

The armatures are equipped with an adjustable mounting bracket and a junction box, convenient for onsite wire installation. The coated aluminium body is resistant to harsh conditions and the anti-drop chain improves the operational safety when installed. The LF30X armatures have a very high energy efficiency (up to >100 lm/w), are available with a 10°, 25°, or 60° optics and 2700K, 3000K or 5500K color temperature. With the ordering key on page 2, you can compile your own armature specially carried out for your purpose. Naturally, NANHUA-EUROPE is of your assistance for composing your unique armature.

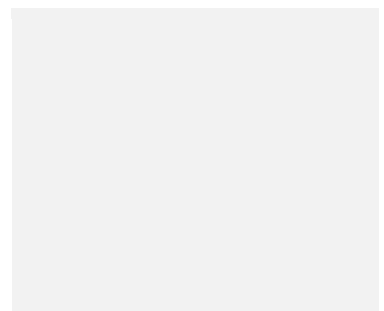
With a proven track record of over 18 years of experience worldwide, state-of-art advanced technology, long life span (> 50.000 operating hours) and a shock and vibration proof design; NANHUA-EUROPE has a leading role being a dedicated supplier for small and big global companies, operating in many industrial sectors.



LF30X-830-200-25



LF30X-830-200-60





Ordering key

--	--	--	--	--	--	--	--	--	--

Special

Standard configuration

X Custom options (consult factory)

Lighting Angle

- 10** 10°
- 25** 25°
- 60** 60°

Output

- 100** 100 Watt
- 150** 150 Watt
- 200** 200 Watt

Ra-value & Color Temperature

- 755** Ra=70-80; 5500K
- 827** Ra=80-90; 2700K
- 830** Ra=80-90; 3000K

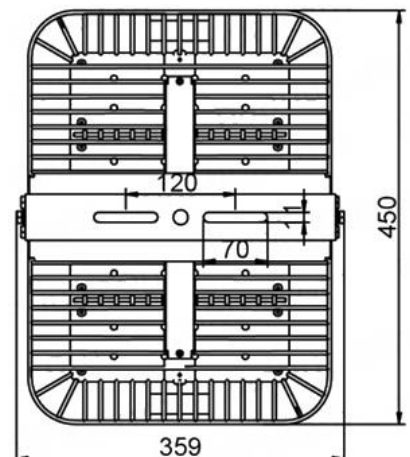
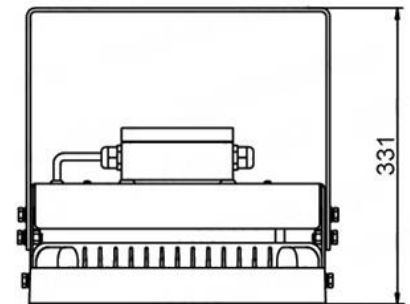
Serie

- LF301** Floodlight 100 W
- LF302** Floodlight 150 W
- LF303** Floodlight 200 W



Technical Information

Operating Voltage	AC100V~AC240V
Frequency	50Hz ~ 60Hz
Power consumption	LF301:100W / LF302:150W / LF303:200W
PF	>0.9
Color Rendering Index	2700K: Ra=85; 3000K: Ra=80; 5500K: Ra=75
Color temperature	2700K (warm white) / 3000K (neutral white) / 5500K (cold white)
Lighting angle	10°/25°/60°
Light efficiency	85-90 lm/W
Lifetime	≥50,000hrs
Lumen depreciation	Less than 20% within 5 years usage
Operating temperature	-30°C ~ +60°C
Humidity	10% ~ 95% (No coagulation)
IP Code	IP65
Material	Body: Aluminium alloy; Lens: Polycarbonate
Weight	LF301: 9 kg / LF302: 10 kg / LF303: 11 kg



Due to technological evolution, the luminous flux and the electrical power have tolerances of +/- 10% compared to the indicated value (Ta +25°C).